

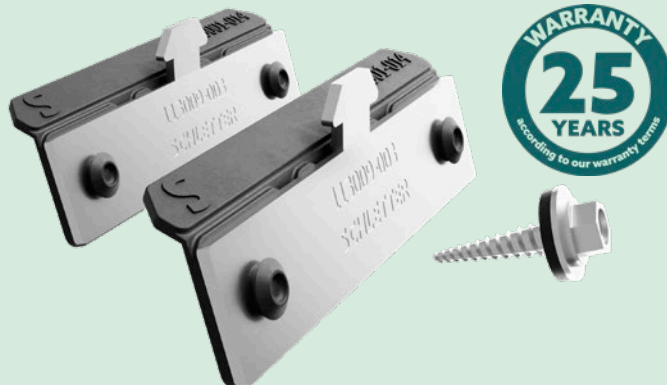
SINGLEFIX PRO

PRODUCT SHEET

Direct fastening to self-supporting trapezoidal sheet metal roofs and sandwich panels

Unrivalled simplicity

Structurally optimised by lateral screw placement



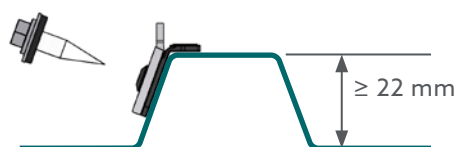
SIMPLE DIRECT-FASTENING SOLUTION

Self-supporting trapezoidal sheet metal roofs may not always allow for fastening systems to be attached to the substructure. Similarly, sandwich panels do not allow for penetrations to the substructure due to problems with condensation. However, they often offer load-bearing capacity for direct fastening to the roof surface:

This is where SingleFix Pro offers an unrivalled, quick and easy fastening solution. The system uses Schletter module-bearing rails with the SingleFix Pro fasteners to allow for portrait and landscape module mounting.

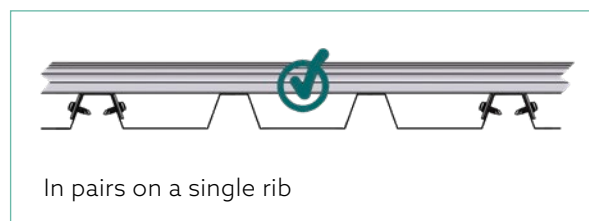
Fastening always comprises two plates attached symmetrically and opposing each other. →

APPLICABLE DIMENSIONS

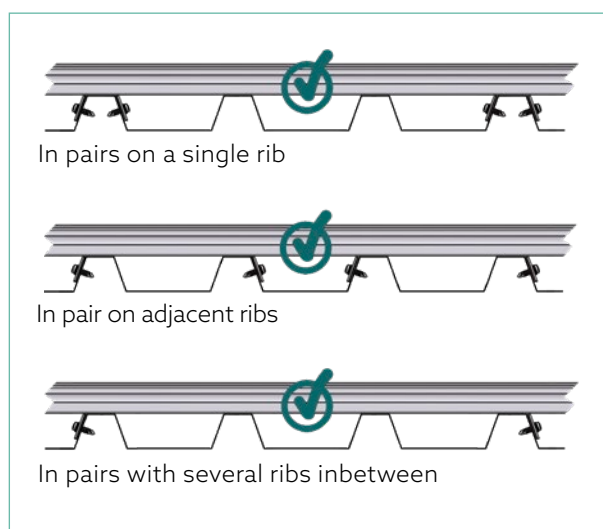


Trapezoidal sheets with a minimum rib height of 22 mm

Attachment to sandwich panels



Attachment to trapezoidal sheet metal



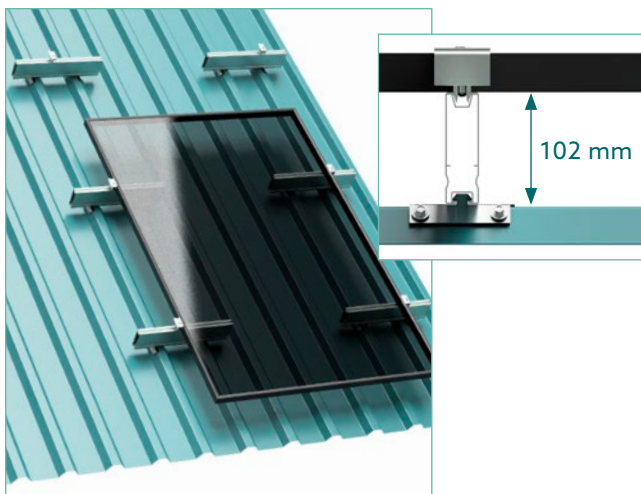
NOT TO BE ATTACHED WITH THE SINGLEFIX PRO PLATES FACING THE SAME SIDE OF THE RIBS:



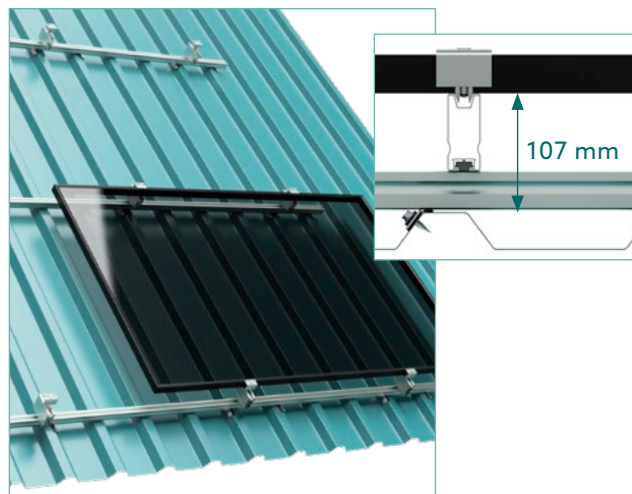
SINGLEFIX PRO

MODULE MANUFACTURER SPECIFICATIONS

When required, a gap of ≥ 10 cm between the roof cladding and module can be created for both portrait and landscape mounting.



Portrait mounting with Pro100
Module-bearing Rail



Landscape mounting with Pro70 Twist-in Module
Support and Pro35 Module-bearing Rail

TECHNICAL DETAILS

Scope of application	Direct fastening to trapezoidal roofs with a sheet thickness from 0.5 mm
Material	System components: Aluminium and Stainless Steel Screws: Stainless Steel Gaskets: EPDM rubber
Planning aid	Configuration and design report using the Schletter Configurator
Structural design	Structural calculation based on current recognised rules of technology. Structural verification of the mounting system is based on the relevant Eurocodes in conjunction with general building inspectorate approvals. The load assumptions comply with DIN EN 1991-1 and the regulations of the national annex. Verification of roofing and building is not included. Notes in the verification must be observed.
Warranty	25 years in accordance with our Guarantee Terms and Conditions
Supplementary documents	SingleFixPro Installation Instructions Product Catalogue – Trapezoidal Sheet Fasteners

SINGLEFIX PRO

PARTS LIST

113009-003	SingleFix Pro	PU: 100
-------------------	---------------	---------



SUPPLEMENTARY PARTS (ordered separately)


943000-700	Screw 5.5 x 25 A2 with rubber gasket (for thin sheet metal) German Building Authority, ETA, ETN, MCS012 approved. Compatible with SingleFix Pro for use in DE, FR & GB. Suitable for manufacturer approved sandwich panels.	PU: 100
-------------------	--	---------

► **PLEASE NOTE:**
Each SingleFix Pro plate
requires 2 screws



943000-360	Screw 6.0 x 25 A2 with rubber gasket (for thin sheet metal) German Building Authority, ETA, ETN, MCS012 approved. Compatible with SingleFix Pro for use in DE, FR & GB.	PU: 100
-------------------	---	---------

943001-232	Screw 5.5 x 25 A2 with Oz gasket (for thin sheet metal) Compatible with SingleFix Pro for use <i>outside</i> of DE, FR & GB.	PU: 100
-------------------	---	---------

120011-00450	EcoLight Module-bearing Rail 450 mm	 PU: 50
---------------------	-------------------------------------	--

120020-00450	Pro35 Module-bearing Rail 450 mm	 PU: 50
---------------------	----------------------------------	--


120023-00450	Pro100 Module-bearing Rail 450 mm	 PU: 50
---------------------	-----------------------------------	--

120022-000	Pro70 Twist-in Module Support	 PU: 100
-------------------	-------------------------------	---

121010-202	FixZ-7 Lower Module-bearing Rail18 450 mm	 PU: 25
-------------------	---	--

121001-202	FixZ-7 Upper Module-bearing Rail18 450 mm	 PU: 25
-------------------	---	--

121009-202	FixZ-15 Lower Module-bearing Rail18 450 mm	 PU: 25
-------------------	--	--

121008-202	FixZ-15 Upper Module-bearing Rail18 450 mm	 PU: 25
-------------------	--	--

120034-00450	FixZ 450 mm	 PU: 50
---------------------	-------------	--

119015-002	Punched Mounting Tape 6 (optional)	PU: 50 m
-------------------	------------------------------------	----------

► **PLEASE NOTE:**
We recommend connecting rails
with punched mounting tape,
using sheet metal screws for
equipotential bonding.

