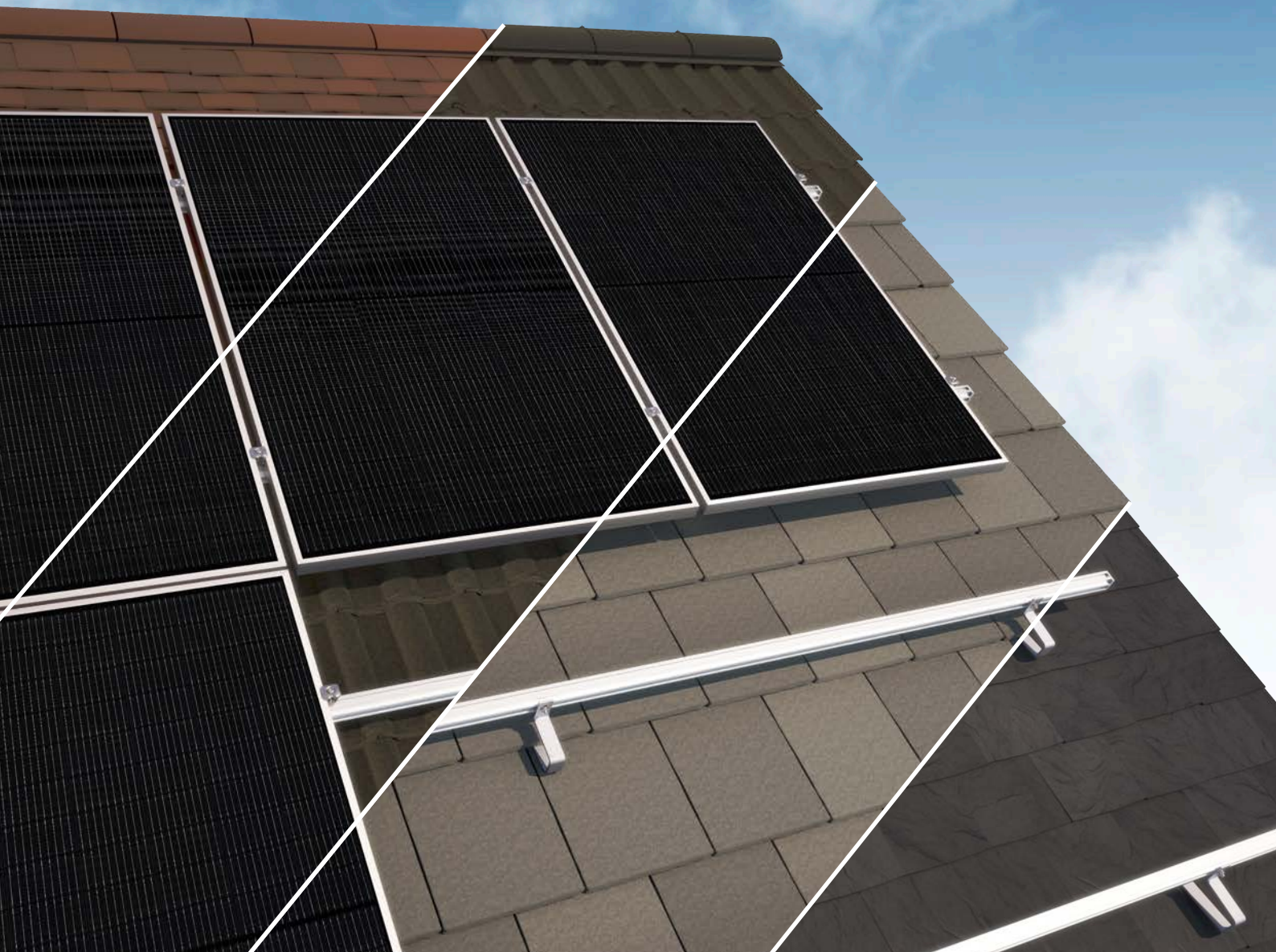


Adjustable

and stronger than you think ...



VS+ | EN



... the universal roof attachment series from Renusol

The VS+ range is characterised by its extreme high versatility. The range of roof hooks Renusol offer are compatible with all popular roof coverings used in the UK for wooden substructures. The benefits are a wide range of solutions, providing you with the essential flexibility for a quick, easy and safe PV installation on pitched roofs.

RH Flat

- Baseplate dimensions: 58 x 25 x 118 mm
- Compatible with narrower roof trusses ensuring a safe connection, designed for various thin roof tiles
- By turning the base plate 180 degrees you can adjust the roof hook angle between 5 and 11 degrees
- Height adjustment between: 25.5 and 38 mm

RH 1

- Baseplate dimensions: 115 x 38 x 118 mm
- Compatible with narrower roof trusses ensuring safe connections, designed for pan-tile roof coverings
- Height adjustment between: 41 and 67 mm

Advantages

- Cost effective: Less roof hooks thanks to higher load capacity
- Optimised logistics: 2 roof hooks cover all popular UK tile roof coverings
- Pre-assembled: Easy and quicker to install
- Dimensions specific for UK roof tiles and battens
- Less cutting of tiles required due to adjustability
- RH1 adjustable in two dimensions, RH Flat adjustable in three dimensions

For specific questions please contact us:

Technical department

Phone: +49 221 788707-29

+44 7766006489

Email: technical-support@renusol.com

Renusol Europe GmbH

Piccoloministraße 2

51063 Cologne

Germany

Phone: +49 221 788707-0







Fax: +49 221 788707-99

Email: info@renusol.com

www.renusol.co.uk



UK Roofhook Compatibility chart (suggestion)

	 RH 1 R420171	 RH Flat R420172
 Plain Tile	X	●
 Natural slate	X	●
 Single & double Roman	●	○
 Modern Interlocking Tile	●	○

- preferred solution
- acceptable alternative
- X not recommended