

PHOTO DOCUMENTATION

CN217HX9 001 and CN21FL8O 001 attachment

for

LFP Lithium Ion Energy Storage System

PowerCube-M1-C-32/zzzV-L10 (zzz=32~864, in steps of 32)

PowerCube-M1-C-32/zzzV-J10 (zzz=256~864, in steps of 32)

Pylon Technologies Co., Ltd.



This documentation consists of 16 pages (excluding this cover page)

Report Number: CN217HX9 001, CN21FL8O 001 attachment

Model: see cover



Figure 1 Battery System (Front view for 27 modules)



Figure 2 Battery System (Rear view for 27 modules)

Report Number: CN217HX9 001, CN21FL8O 001 attachment

Model: see cover



Figure 3 Battery System (Side view for 27 modules)



Figure 4 Battery System (Side view for 27 modules)

Report Number: CN217HX9 001, CN21FL8O 001 attachment

Model: see cover



Figure 5 Battery System (Front view for 25 modules)



Figure 6 Battery System (Rear view for 25 modules)

Report Number: CN217HX9 001, CN21FL8O 001 attachment

Model: see cover



Figure 7 Battery System (Side view for 25 modules)



Figure 8 Battery System (Side view for 25 modules)

Report Number: CN217HX9 001, CN21FL8O 001 attachment

Model: see cover

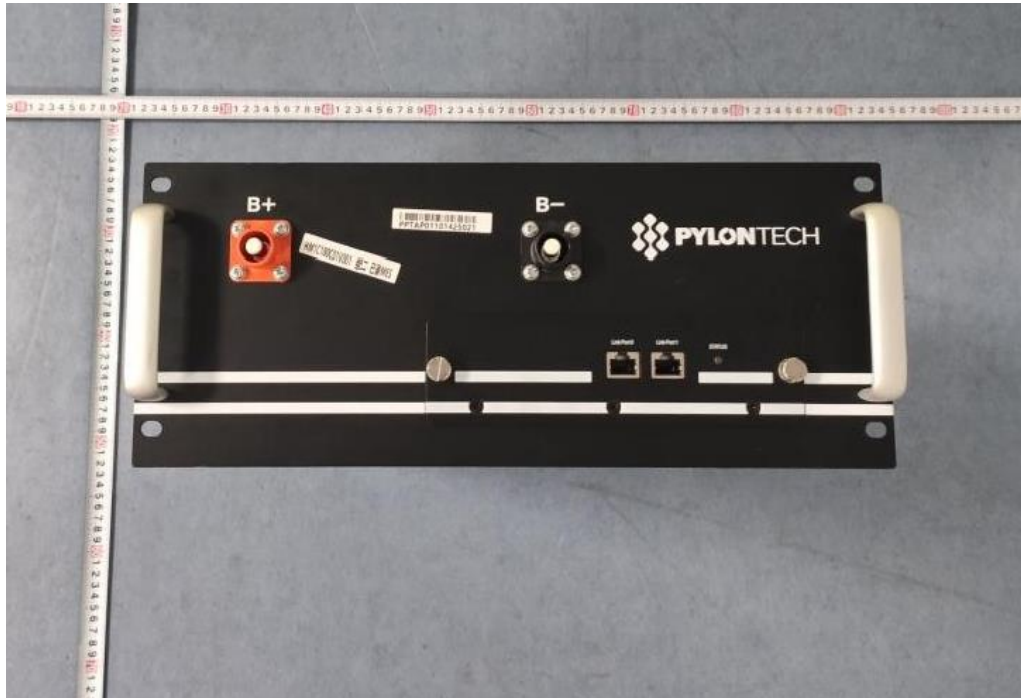


Figure 9 Battery pack (Front view)



Figure 10 Battery pack (Rear view)

Report Number: CN217HX9 001, CN21FL8O 001 attachment

Model: see cover

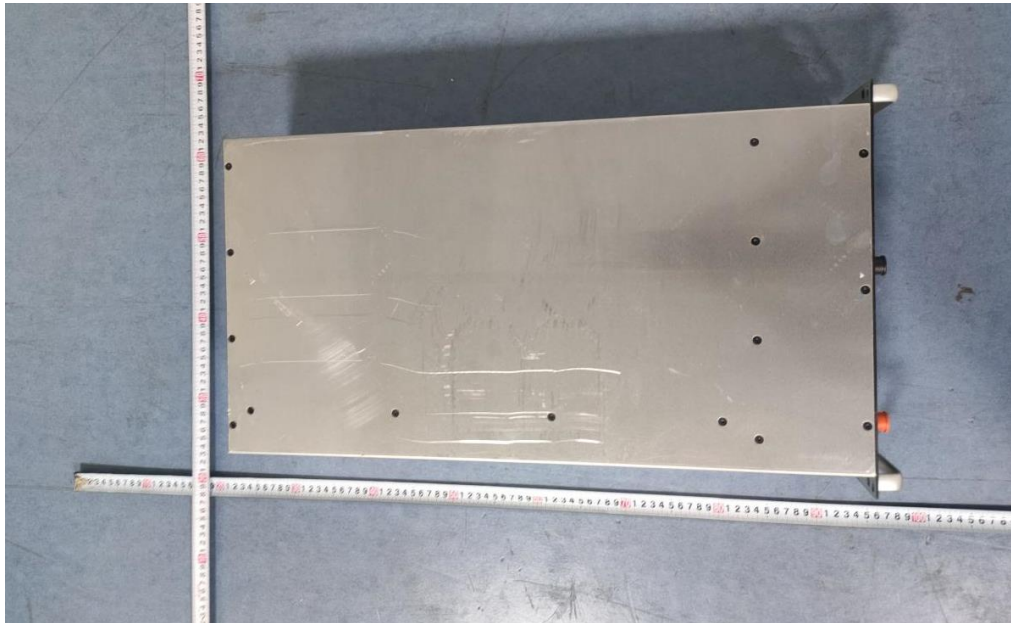


Figure 11 Battery pack (Top view)



Figure 12 Battery pack (Side cover)

Report Number: CN217HX9 001, CN21FL8O 001 attachment

Model: see cover



Figure 13 Battery pack (Remove top cover)



Figure 14 Battery pack (Remove top cover)



Figure 15 Battery pack (Remove top cover)

Report Number: CN217HX9 001, CN21FL8O 001 attachment

Model: see cover

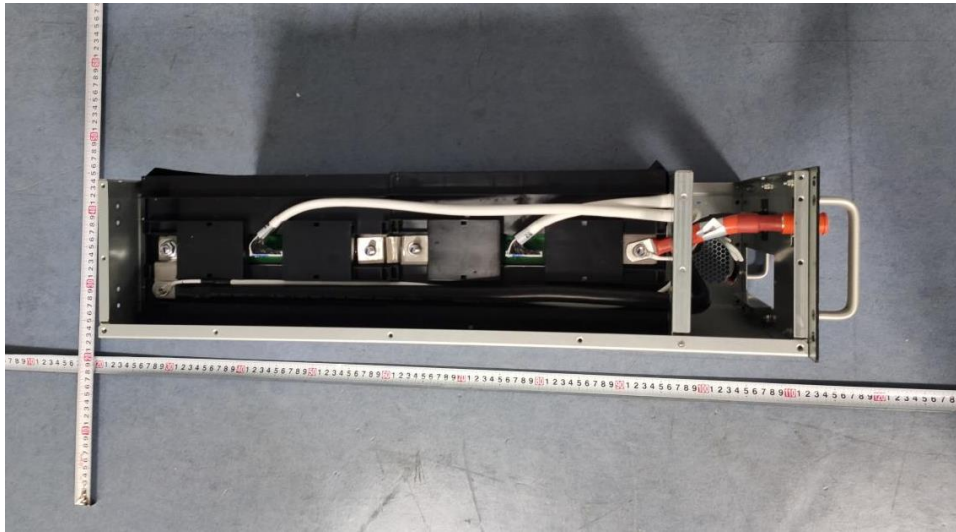


Figure 16 Battery pack (Remove Side cover)

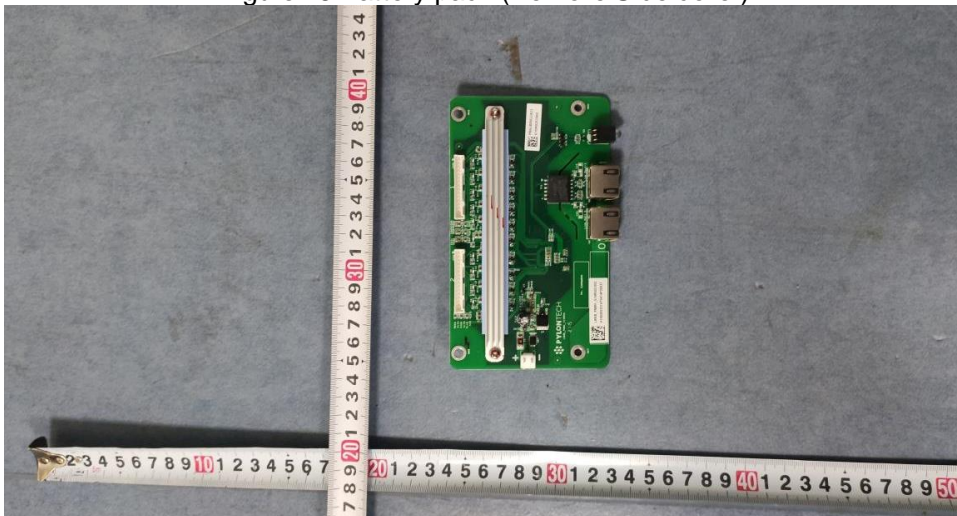


Figure 17 Pack Sampling Communication Board (side A view)

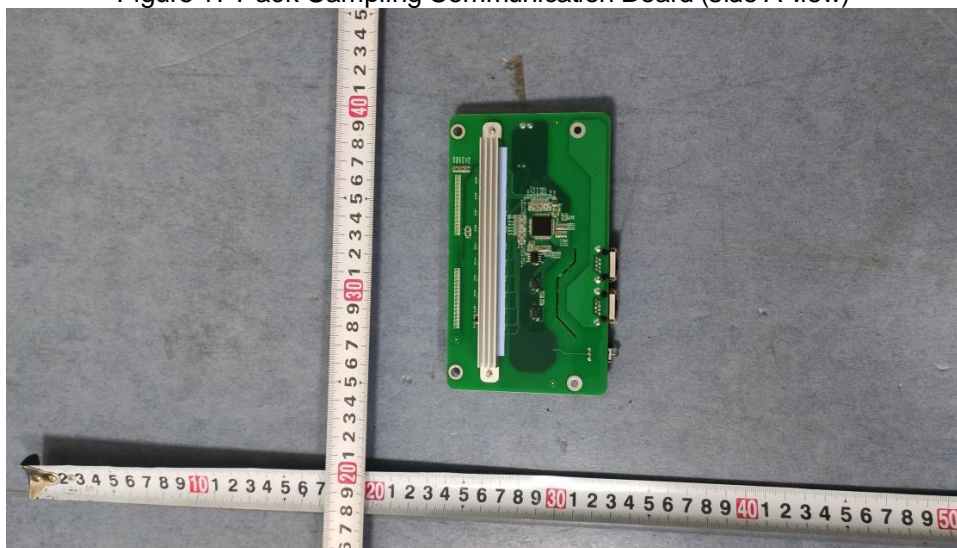


Figure 18 Pack Sampling Communication Board (side B view)

Report Number: CN217HX9 001, CN21FL8O 001 attachment

Model: see cover

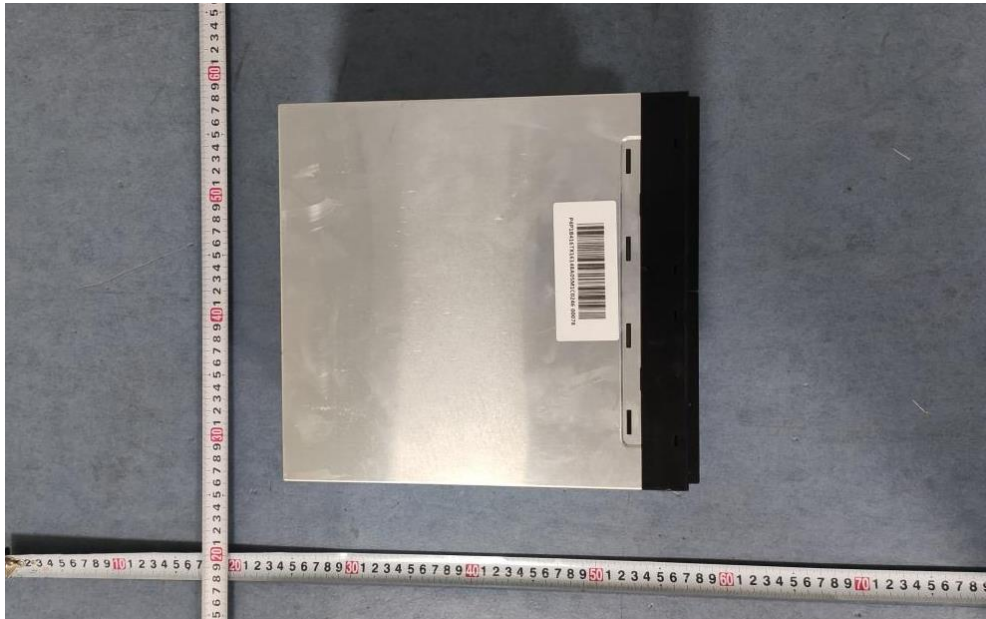


Figure 19 Module (Top view inside pack)

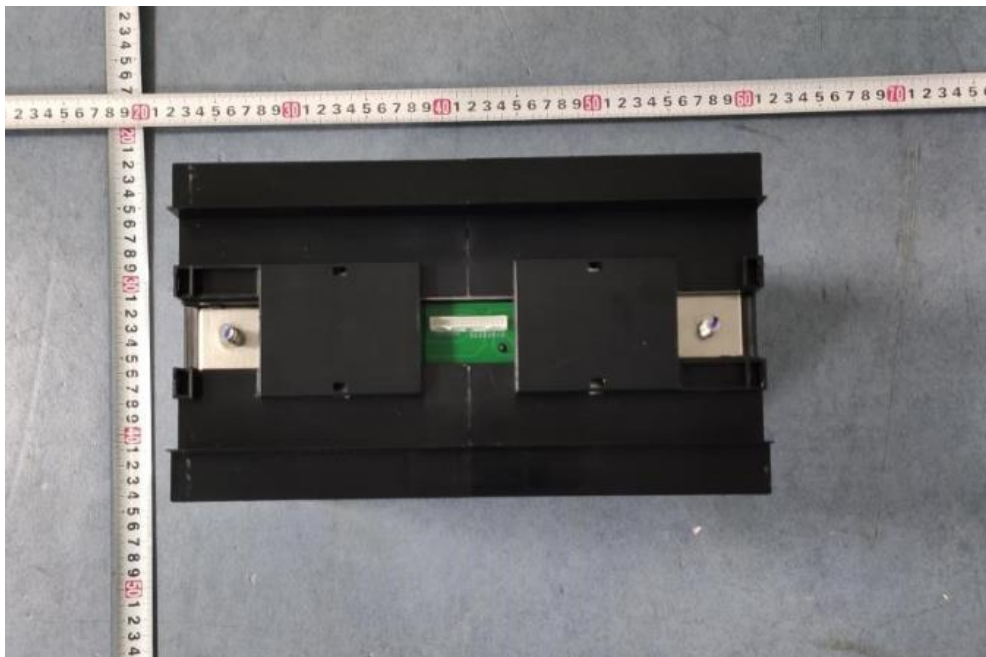


Figure 20 Module (Front view inside pack)

Report Number: CN217HX9 001, CN21FL8O 001 attachment

Model: see cover



Figure 21 Module (Terminal view inside pack)



Figure 22 Cell view

Report Number: CN217HX9 001, CN21FL8O 001 attachment

Model: see cover



Figure 23 Control box (Front view for S1000-200L-C)



Figure 24 Control box (Front view for S1000-200J-C)

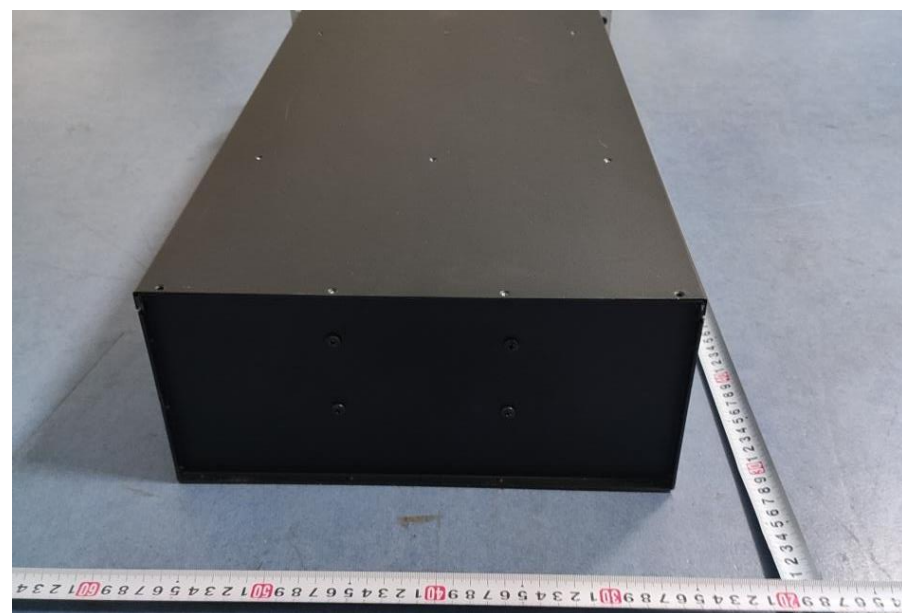


Figure 25 Control box (Rear view)

Report Number: CN217HX9 001, CN21FL8O 001 attachment

Model: see cover

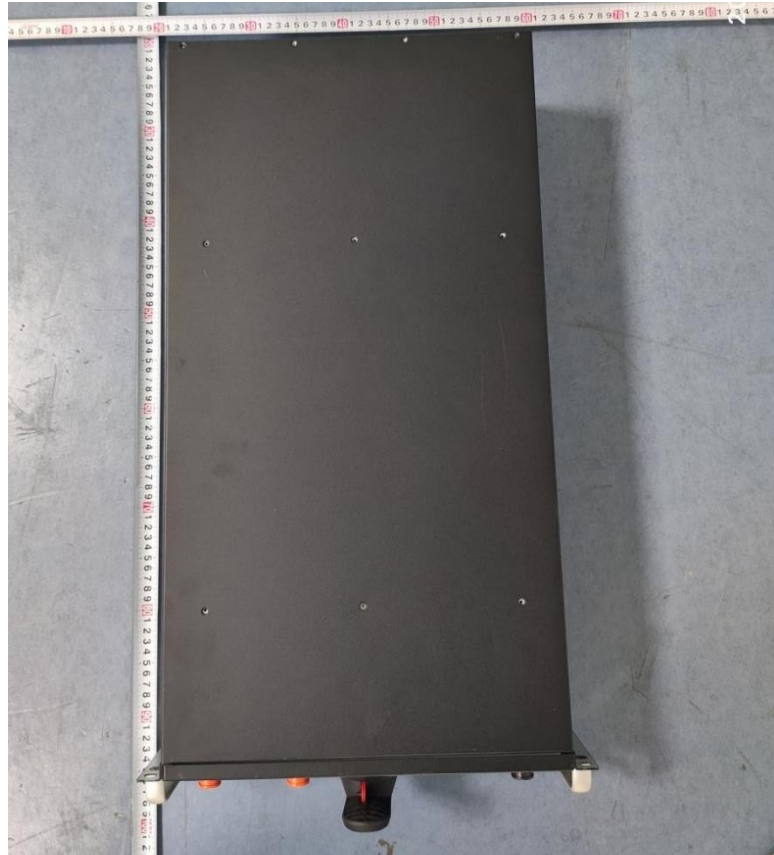


Figure 26 Control box (Top view)



Figure 27 Control box (Side view)

Report Number: CN217HX9 001, CN21FL8O 001 attachment

Model: see cover

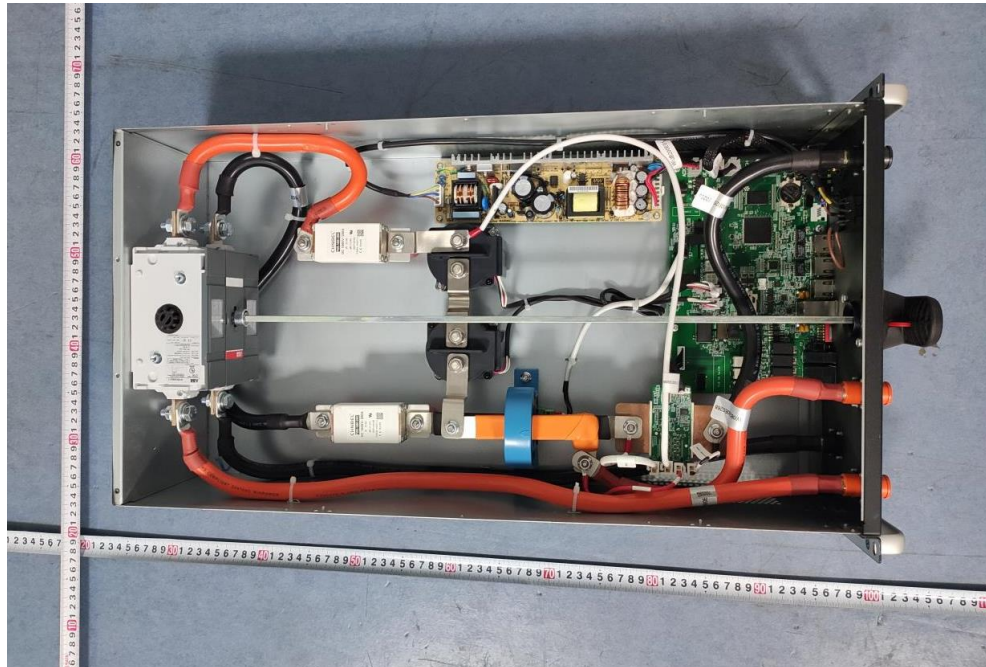


Figure 28 Control box (Inside view for S1000-200L-C)

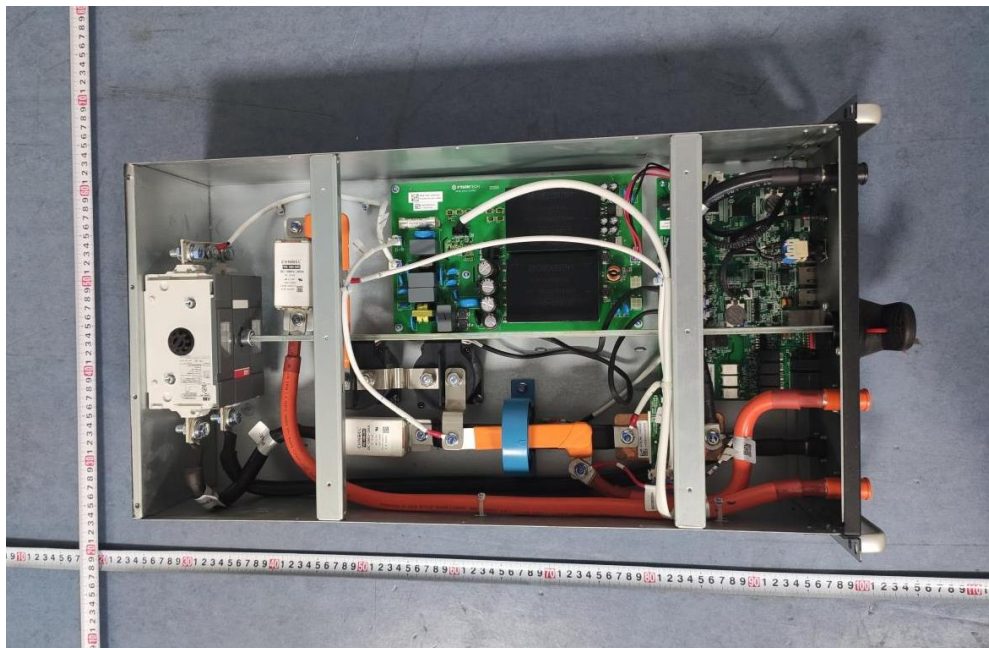


Figure 29 Control box (Inside view for S1000-200J-C)

Report Number: CN217HX9 001, CN21FL8O 001 attachment

Model: see cover

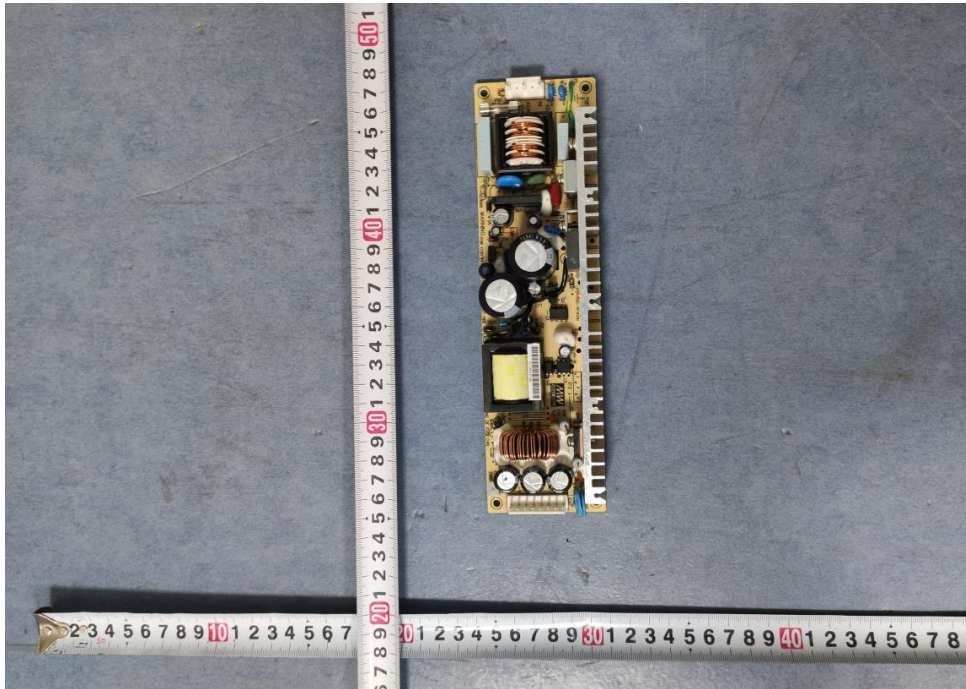


Figure 30 AC-DC (Component side view for S1000-200L-C)

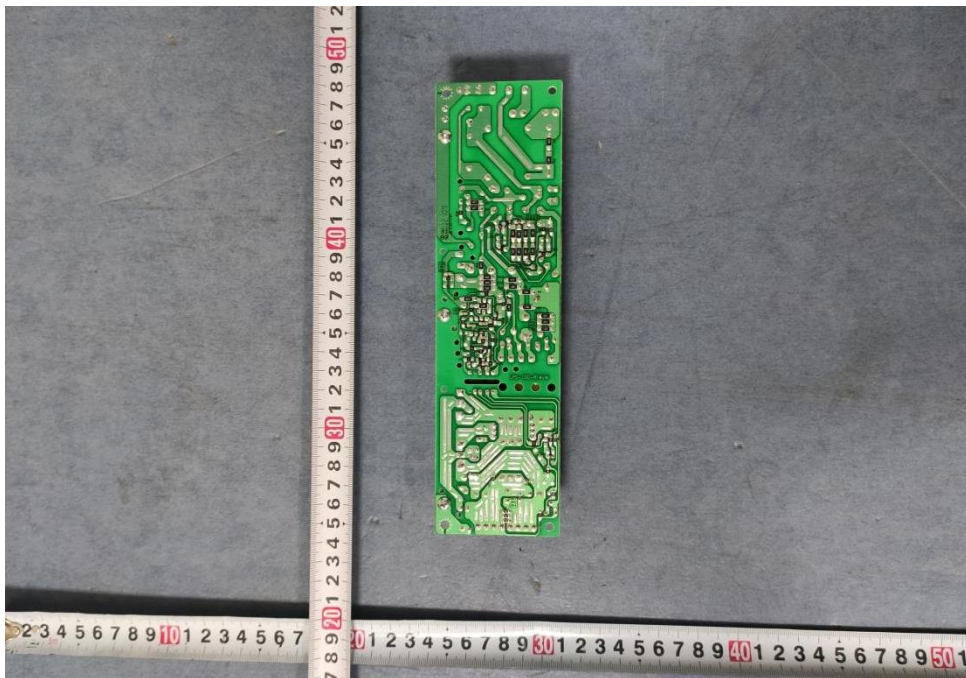


Figure 31 AC-DC (Solder side view for S1000-200L-C)

Report Number: CN217HX9 001, CN21FL8O 001 attachment

Model: see cover

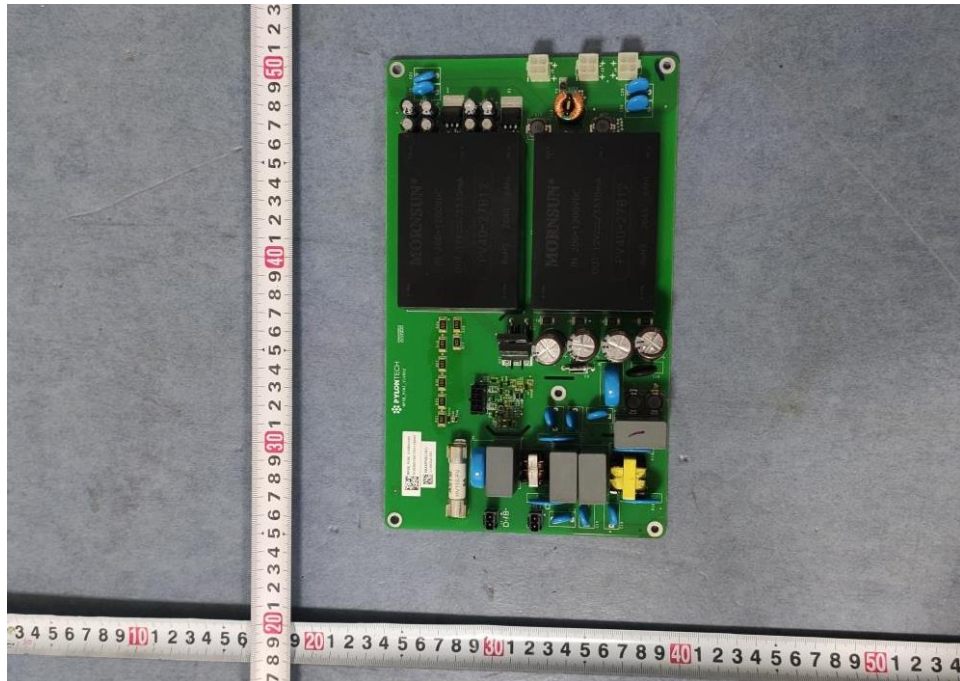


Figure 32 DC-DC (Component side view for S1000-200J-C)

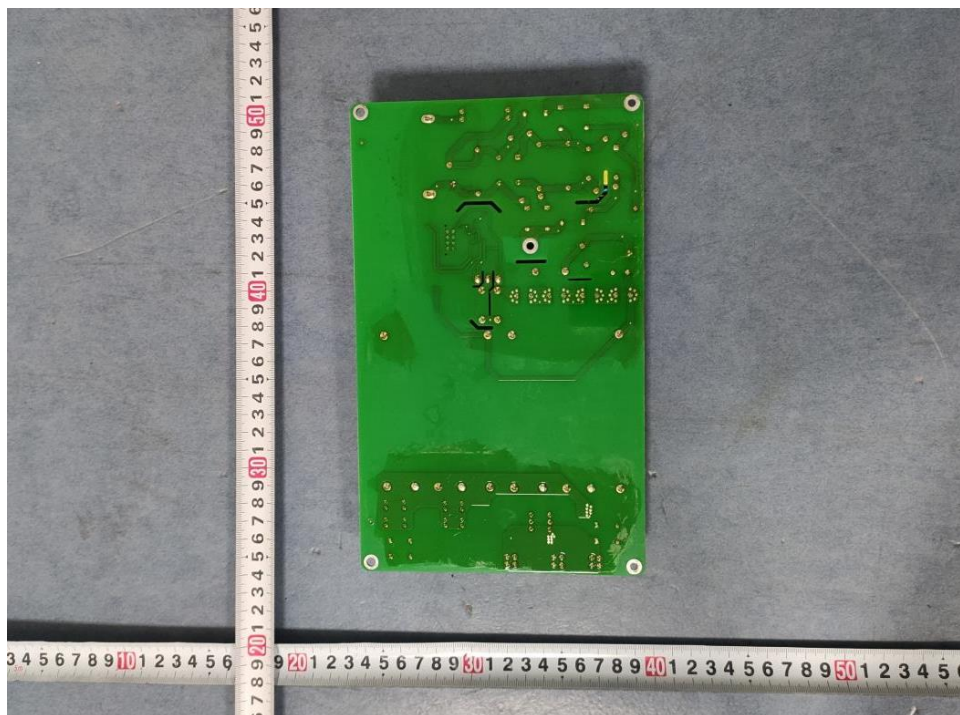


Figure 33 DC-DC (Component side view for S1000-200J-C)

Report Number: CN217HX9 001, CN21FL8O 001 attachment

Model: see cover

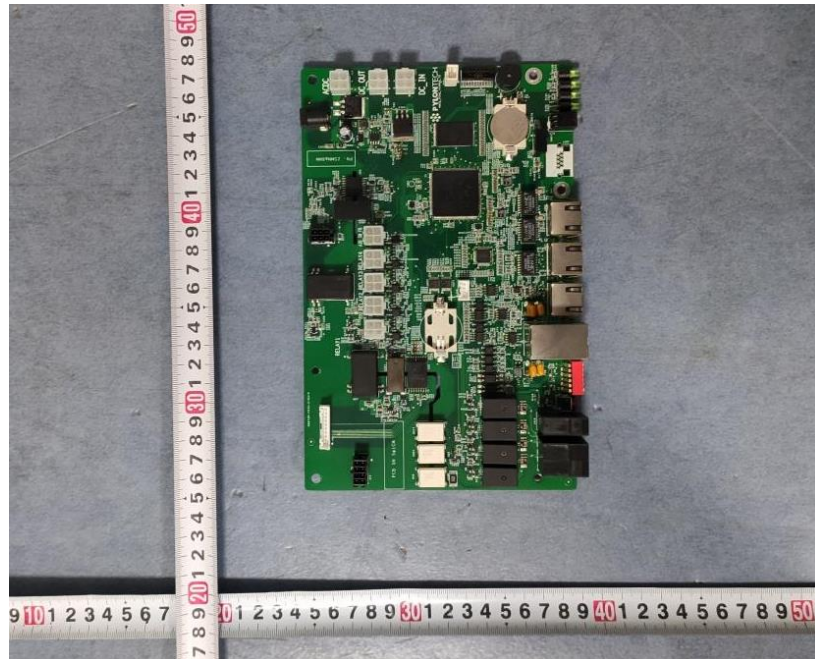


Figure 34 Master control board (component side view)

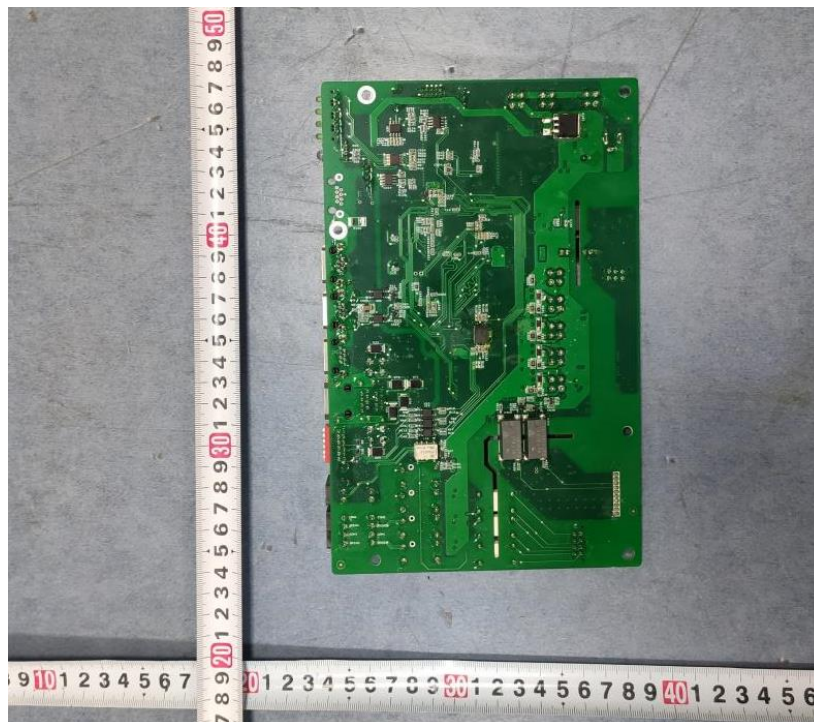


Figure 35 Master control board (component side view)