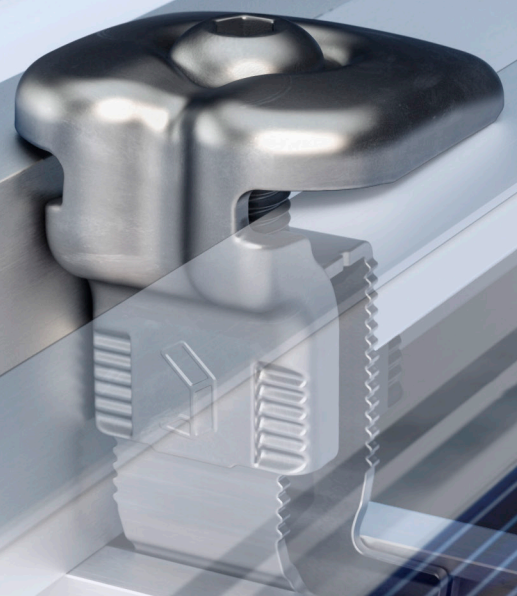


All panel heights, all functions, one clamp!

# ONE FOR ALL!



**RS1**

# RS1

## The ultimate all-in-one-clamp for framed modules

This innovative masterpiece makes your next PV-project a whole lot easier. The RS1 works as mid- and end clamp. It is height adjustable and secures any framed PV panel starting from 30 mm up to 50 mm height. Twisting the RS1's head changes the functionality from end- to mid-clamp. Installation and positioning works one handed. At the same time it minimizes needed storage space and saves administrative costs in item management. The RS1 is a real time saver and generates savings over your entire value chain.

### Innovative technology

- One clamp with dual functionality (mid- and end-clamp)
- Height adjustable (30-50 mm)

### Universal

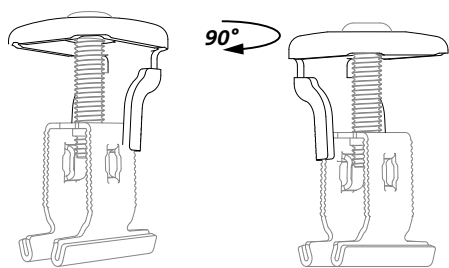
- Always the fitting clamp on site
- One clamp for all your projects
- For most common framed PV-modules in the market
- Applicable with all Renusol mounting systems

### Click, adjust, fasten - done!

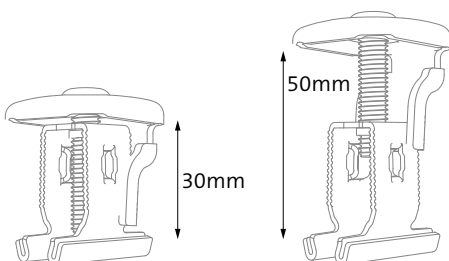
- 90° head twist for dual function
- Function adjustment on the roof
- One-handed installation and positioning in the rail

### Optimized logistics and warehouse management

- Always the fitting component on stock
- 99% coverage of all your module fastening
- Reduces needed storage capacity - savings in warehouse management



Change from end- to mid clamp function by a simple 90° head twist



The integrated height adjustment fixes modules from 30mm to 50mm in height

For specific questions please contact us:

#### Sales department

Phone: +49 221 788707-19  
Fax: +49 221 788707-97  
Email: sales-support@renusol.com

#### Application technicians

Phone: +49 221 788707-29  
Fax: +49 221 788707-98  
Email: technical-support@renusol.com

#### Marketing department

Phone: +49 221 788707-54  
Fax: +49 221 788707-99  
Email: marketing@renusol.com

Renusol GmbH  
Piccoloministraße 2  
51063 Cologne  
Germany

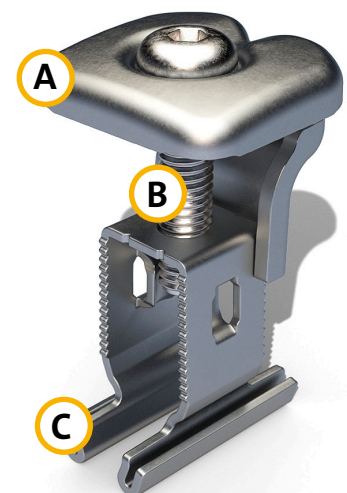
Phone: +49 221 788707-0  
Fax: +49 221 788707-99  
Email: info@renusol.com

[www.renusol.com](http://www.renusol.com)



**PV Configurator**  
Powered by Renusol

[www.pv-configurator.co.uk](http://www.pv-configurator.co.uk)



The RS1 consists of 3 components only:

- A Clamp head
- B Screw
- C Foot

Renusol item no. 420080